



Public Health
Prevent. Promote. Protect.

Executive Summary:

The mission of the Williamson County and Cities Health District (WCCHD), in partnership with communities, is to protect and promote the health of the people of Williamson County. As a public health department serving the people of Williamson County, the most up-to-date information about the health of the community helps guide public health policy and activities.

Within this document, selected public health challenges are examined at the local level using available data sources. Cedar Park and Leander are two of the most rapidly growing population centers in Williamson County. The percent of individuals living in poverty is below the percent in both Williamson County and Texas. The educational attainment is lower on average in Leander, as is the median income. Public health challenges represented in this report include the teen birth rate in the Hispanic or Latino population, the rate of prenatal care in non-white populations, the rate of low-birth weight in the Hispanic or Latino population in Leander, and the heart disease and cancer mortality in Leander.

CEDAR PARK & LEANDER (PRECINCT 2) COMMUNITY HEALTH PROFILE



CEDAR PARK & LEANDER (PRECINCT 2) COMMUNITY HEALTH PROFILE

About Williamson County and Cities Health District:

The mission of the Williamson County and Cities Health District (WCCHD), in partnership with communities, is to protect and promote the health of the people of Williamson County. As a public health department, WCCHD professionals work every day to:

- Assess and monitor the health status of communities and populations at risk to identify health issues facing Williamson County;
- Engage communities to identify and solve health problems;
- Protect people from health problems and health hazards;
- Enforce laws that protect health and ensure safety;
- Give people information they need to make healthy choices;
- Help people access needed health services, including health promotion and disease prevention services.

About the Board of Health:

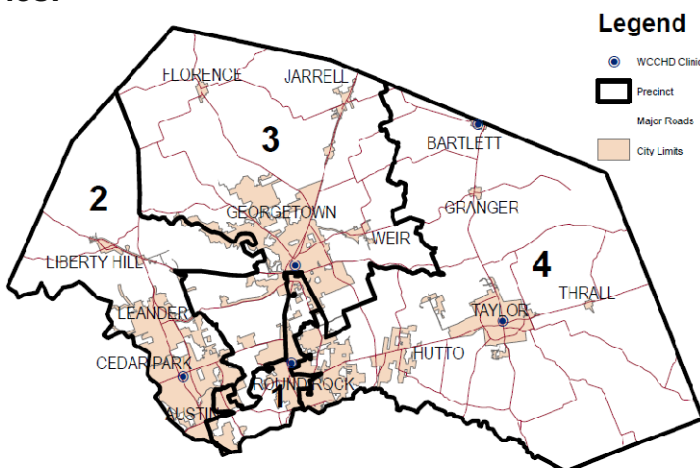
The Board of Health is the administrative authority for the Health District. The governmental entities that form the Health District appoint representatives to serve as directors of the Williamson County Board of Health. Each city with a population of 15,000 or greater appoints one director and the Commissioners' Court appoints two directors. Cities with a population of less than 15,000 appoint one representative to represent them collectively. The Board meets every two months and meetings are open to the public.

Current Members:

- Kerry Russell, Chair**, Represents: Williamson County
- Mary Faith Sterk, Vice-Chair**, Represents: Williamson County
- Katherine M. Galloway, Secretary**, Represents: Cedar Park
- Rob T. Hardy**, Represents: Georgetown
- Pamela Sanford**, Represents: Taylor
- Andy Martinez**, Represents: Round Rock
- Florence Winkler**, Represents: Liberty Hill and Hutto
- W.S. "Chip" Riggins Jr., MD, MPH**, Executive Director and Health Authority, WCCHD

WCCHD Community Health Profile Boundaries:

Cedar Park and Leander are the largest population centers within Precinct 2. Where possible, statistics are presented for the other population centers: Liberty Hill and Austin.



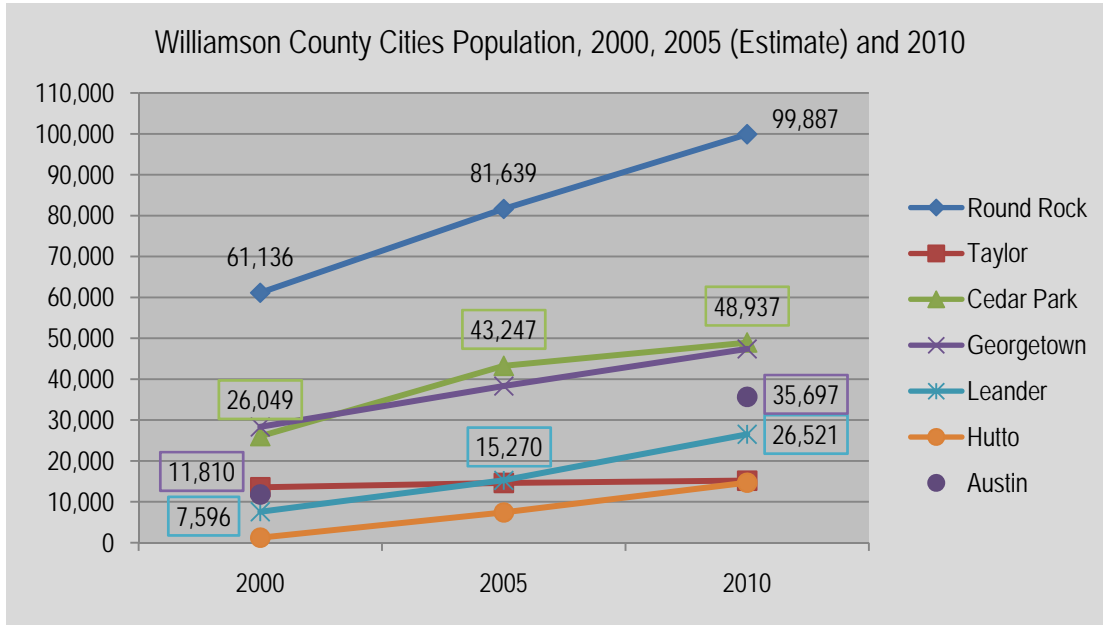
Contact Williamson County and Cities Health District with questions or inquiries:

Katie Arnold, M.P.Aff.
 Research Specialist
 512-248-7671

David G. Bastis, M.P.H.
 Assistant Deputy Director of Special Operations
 512-248-764



Population Demographics

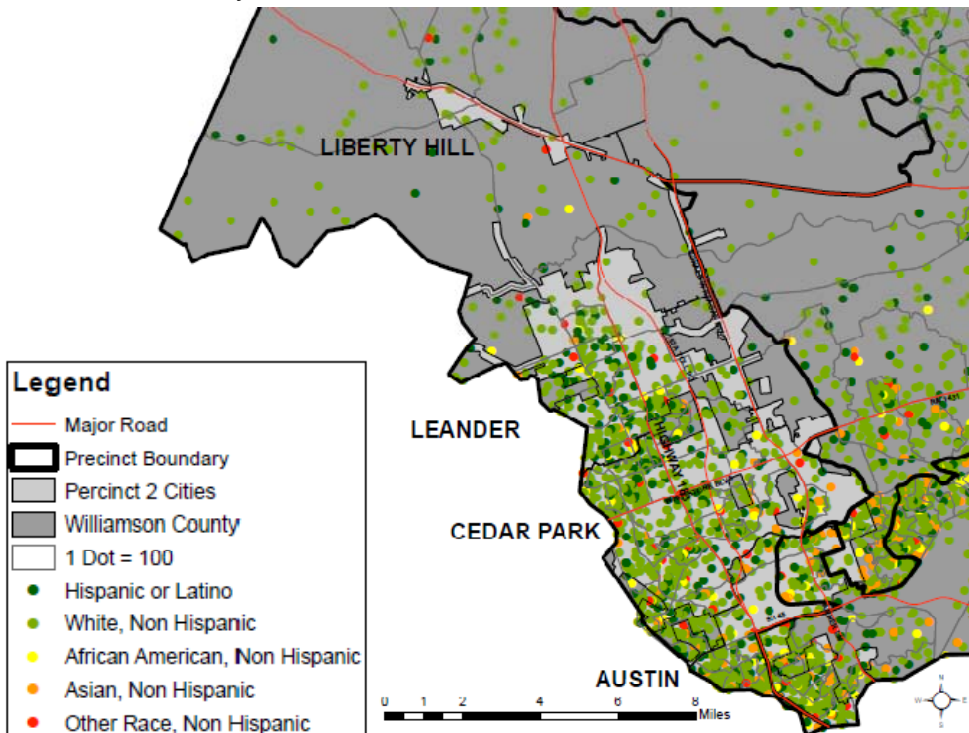


Population in Other Precinct 2 Places:

	Population 2010
Liberty Hill	967

The chart above shows the growth in population in Cedar Park, Leander, and other Williamson County population centers between 2000 and 2010. The population in Cedar Park grew by 22,888 people in this time period, representing 88% growth. The population in Leander grew by 18,925 people in this time period, representing 250% growth. Williamson County as a whole grew in population by 70% over that time. Source: 2000 Census, 2005 Population Estimates, and 2010 Census.

Race/Ethnicity



Race & Ethnicity:

The map represents population density by race/ethnicity in Cedar Park and Leander by census block group. One dot is equal to 100 people of the corresponding race or Ethnicity. Both Leander and Cedar Park are ethnically diverse, with a higher population of people of Hispanic or Latino ethnicity living further north in Leander.

Source: 2010 Census.

**Population Demographics
(cont.)**

Race & Ethnicity, Cont.:

Leander – The percent of the population that is Hispanic or Latino grew by 9 percentage points to 25%, while the percent of the population that is White decreased by 13 percentage points to 66%. Every other grouping, the percent that is African American, Asian, or another race each grew, grew by 1 percentage point each.

Cedar Park – The percent of the population that is Hispanic or Latino grew by 5 percentage points to 19%, while the percent of the population that is White decreased by 10 percentage points to 69%. The percent that is African American, Asian, or another race grew.

Williamson County – The percent of the population in 2000 that was Hispanic or Latino was 17%. At the 2010 Census, 23% of the population was Hispanic or Latino.

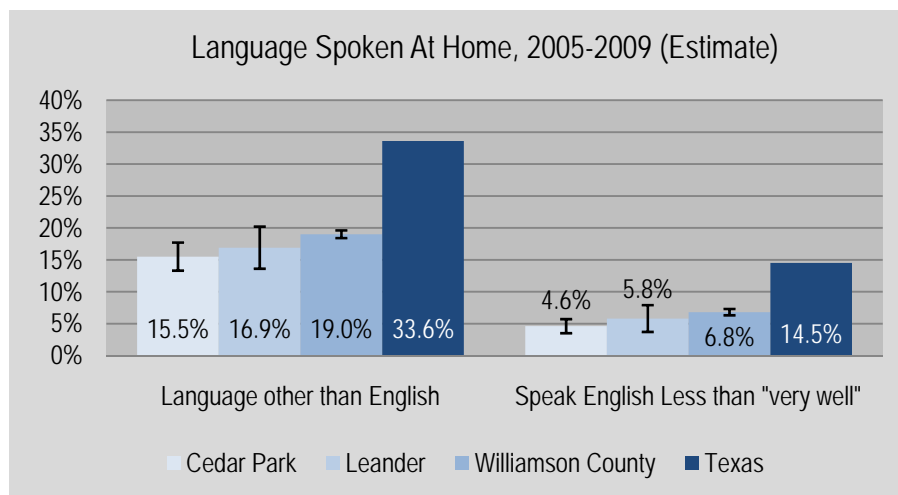
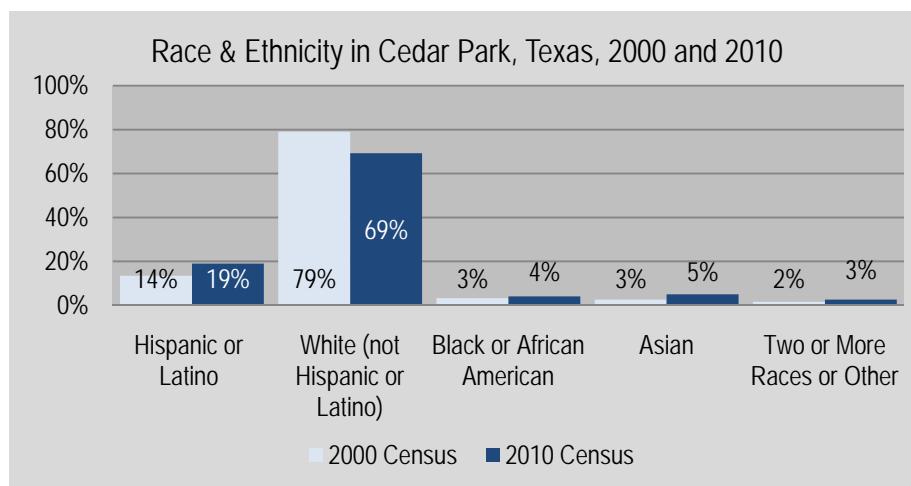
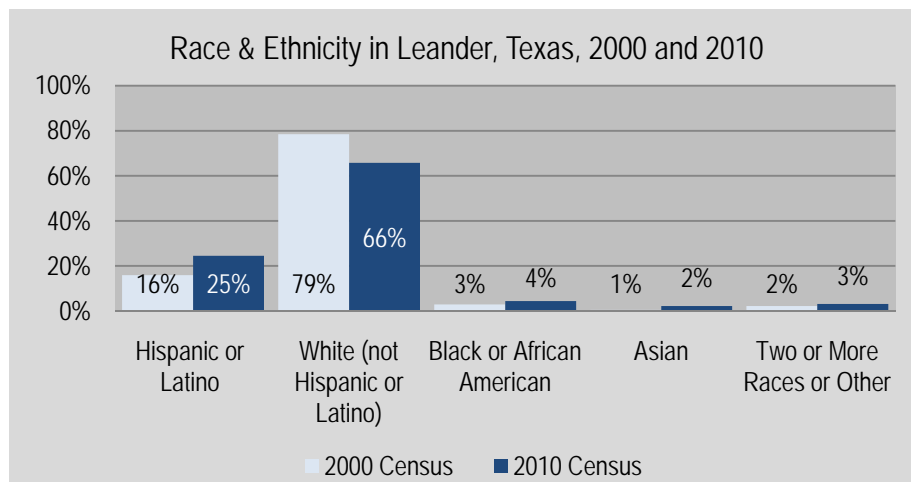
Source: US Census 2000 and 2010

Language Spoken at Home:

The percent of the population that speaks a language other than English at home is higher in Texas than in Cedar Park and Leander.

Source: 2005-2009 American Community Survey (ACS).

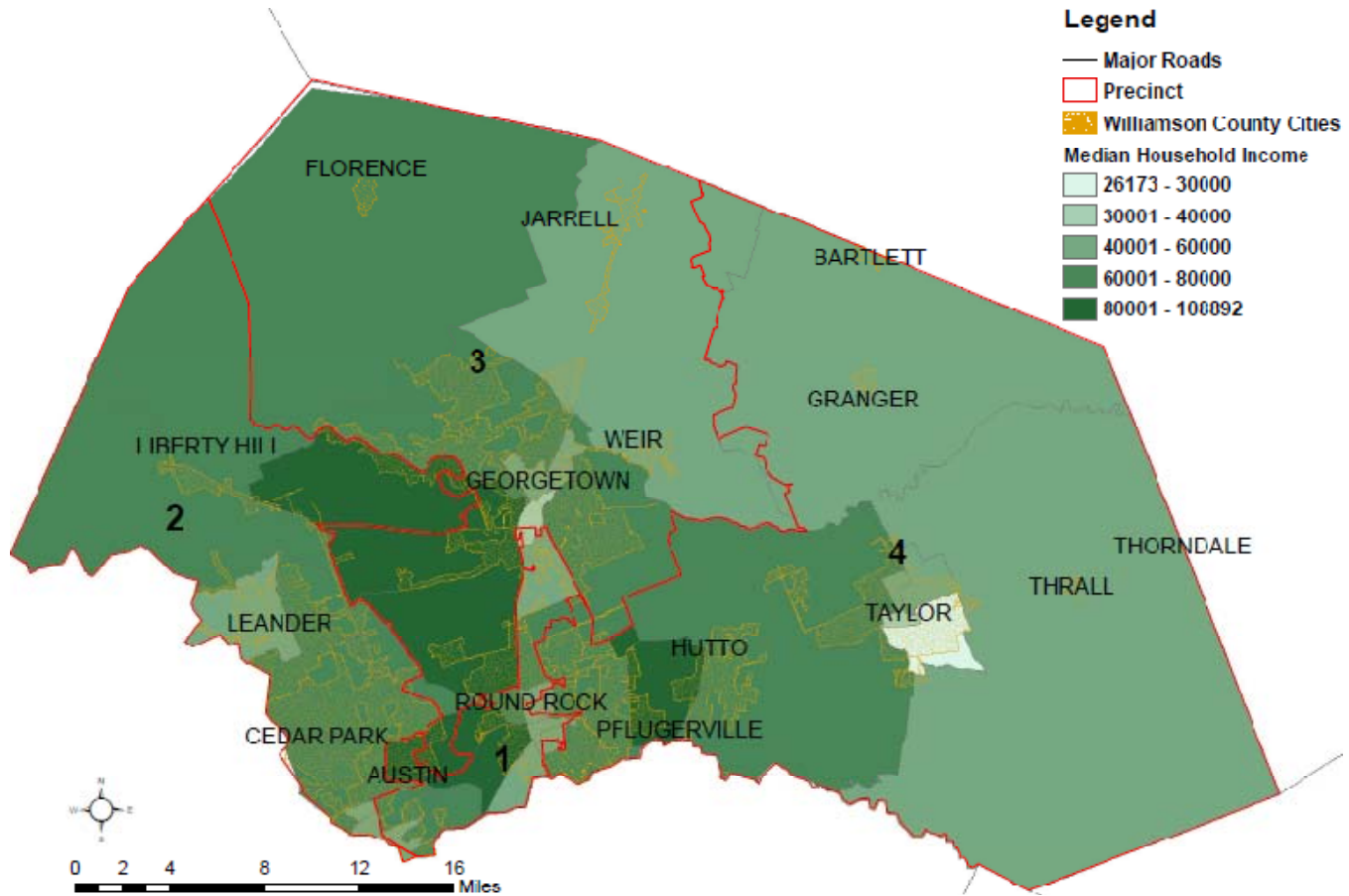
Error bars represent a 90% confidence interval.





Population Demographics (cont.)

Median Income by Census Tract. 2005-09:



Income Distribution:

Cedar Park and Leander have a median household income lower than some parts of Williamson County. The census tract in the northwest part of Leander and the western part of Austin have the lowest median household income in Precinct 2, with the median in the \$40,001 to \$60,000 range.

Source: 2005-2009 American Community Survey (ACS).



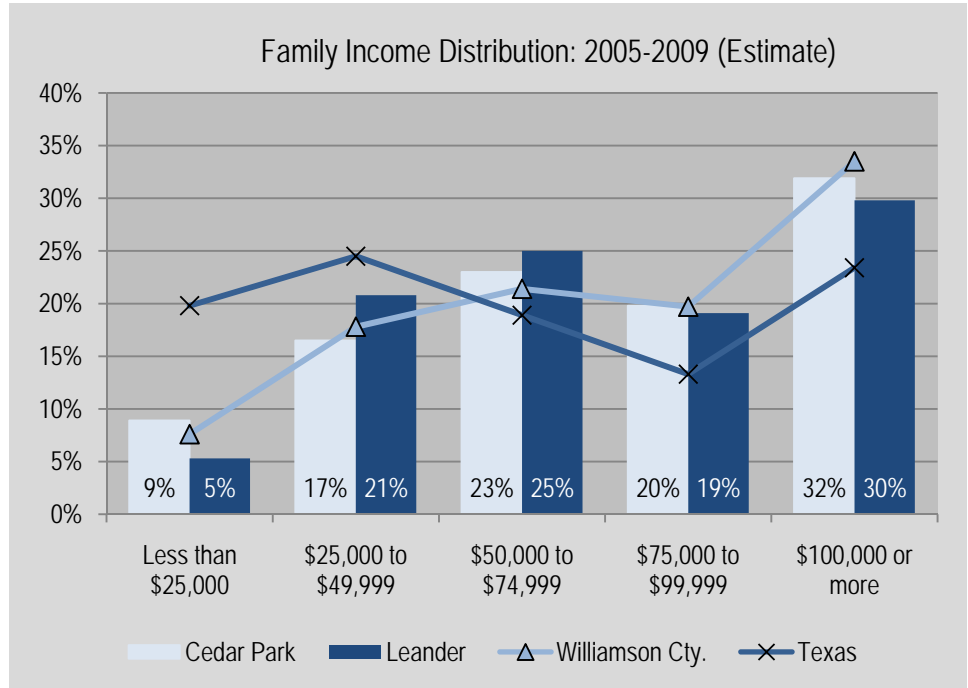
Population Demographics (cont.)

Income Distribution:

The percent of families receiving less than \$50,000 per year is higher in Cedar Park and Leander (26% in both) than in Williamson County (25%), but lower than in the state (45%).

The median family income in Leander was \$73,816 in 2005-09 and it was \$77,679 in Cedar Park during this time period. In the county it was \$78,586 and in the US it was \$62,363.

Source: 2005-2009 ACS.

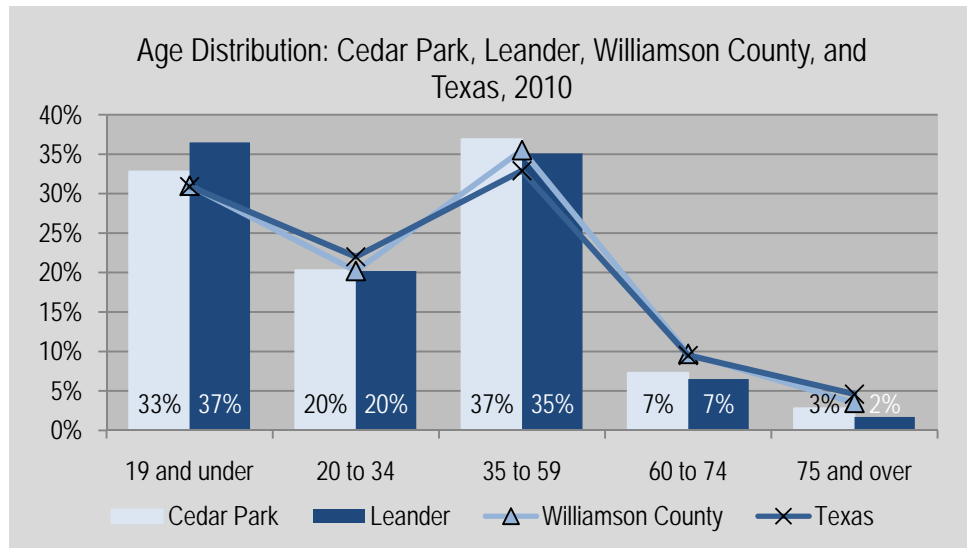


Age Distribution:

The median age in Leander is 31.4, while the median age in Cedar Park is 33.4.

The median age in Williamson County is 34.2 years and in Texas it is 33.6 years.

Source: 2010 Census.





Population Demographics (cont.)

Education:

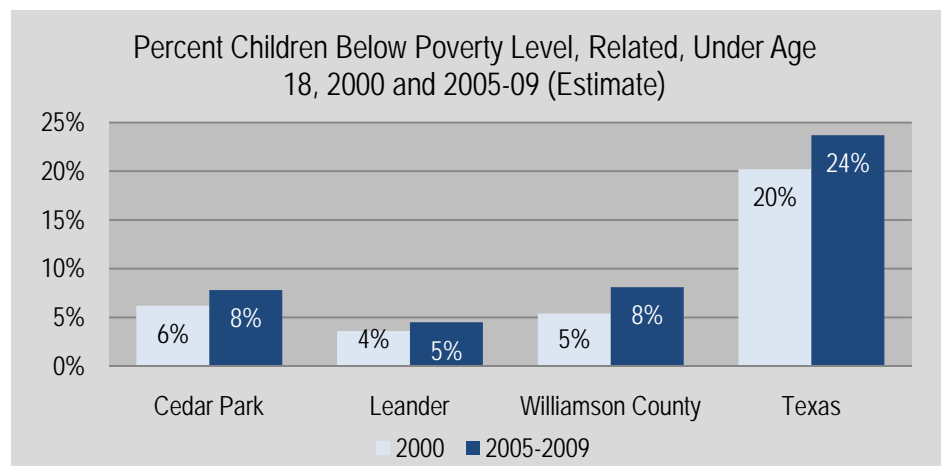
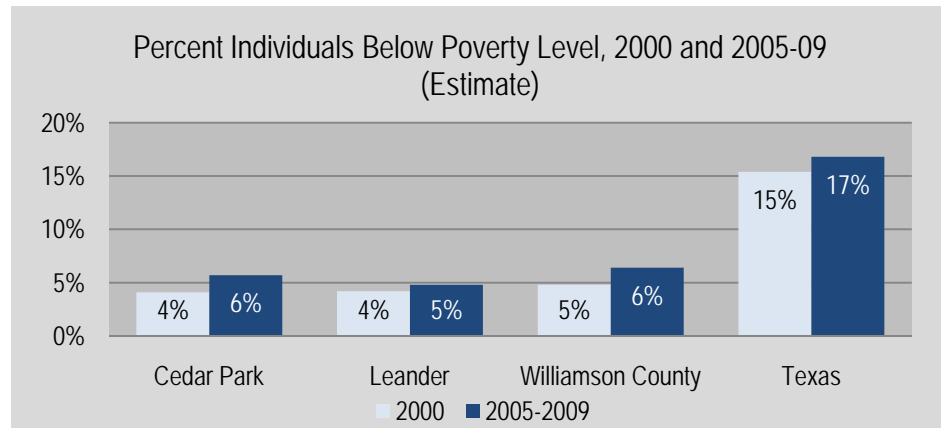
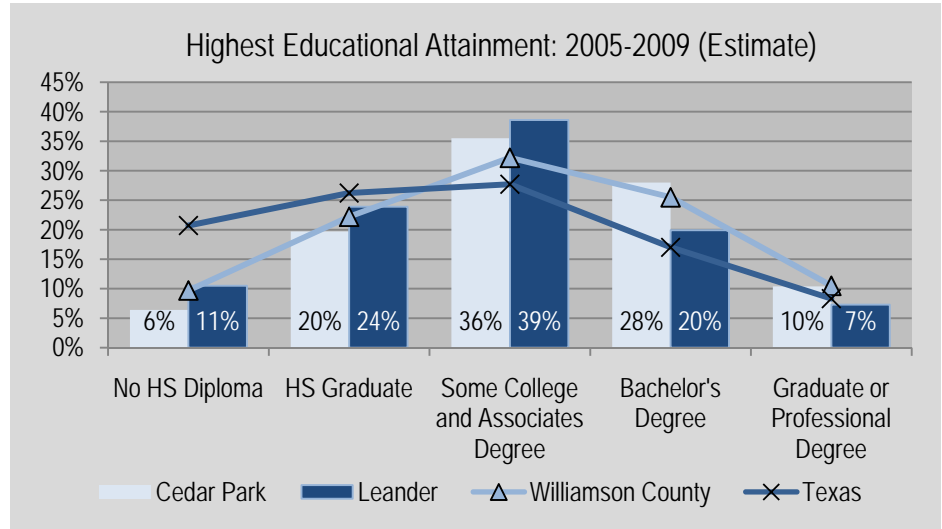
In Georgetown, 67% of residents have some college education or more, slightly less than the percent in Williamson County (69%). In Texas, 53% have some college education or more. Source: 2005-2009 ACS.

Poverty Level:

While the percent of individuals below poverty level did not increase in Georgetown, the percent of people living in poverty has increased in Texas and the County.

In Taylor, 13% of children under the age of 18 live at or below the poverty level. (2005-2009 ACS).

Source: 2000 Census and 2005-2009 ACS.





Vital Statistics - Maternal and Child Health

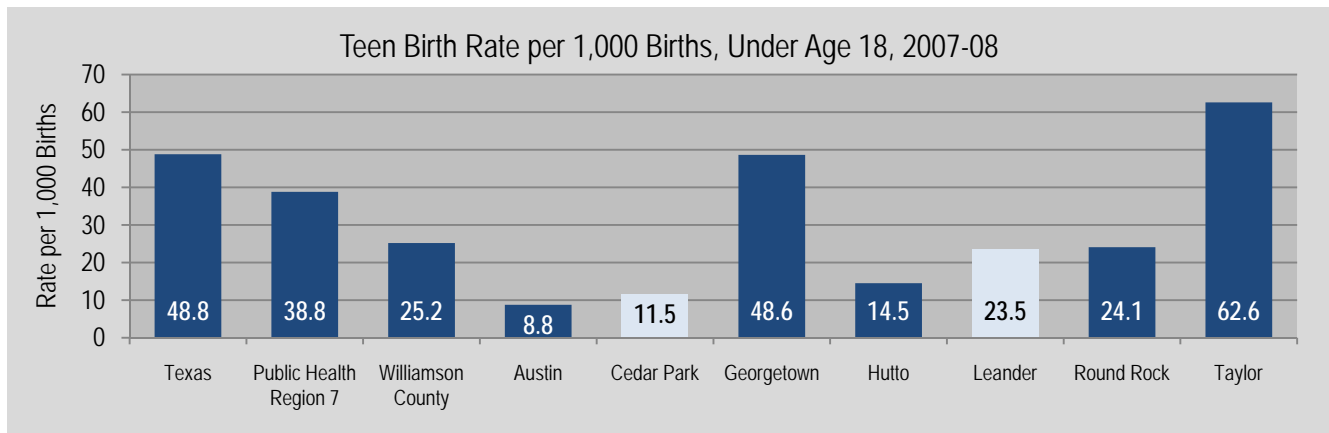
All Births, Cedar Park and Taylor Residence, 2007-08:

(Source: Texas Department of State Health Services)

Race/Ethnicity	Cedar Park		Leander	
	Number	Percent	Number	Percent
White	1466	70.2%	1014	68.1%
African American	57	2.7%	61	4.1%
Hispanic	388	18.6%	365	24.5%
Other	177	8.5%	50	3.4%
Total Births	2088	100%	1490	100.0%

Births to Mothers Under Age 18, Cedar Park and Taylor Residence, 2007-2008*:

	Cedar Park					Leander				
	White	African American	Hispanic	Other	Total	White	African American	Hispanic	Other	Total
Births to Mothers Under 18	7	1	15	1	24	17	2	15	1	35
Total Births, All Ages	1466	57	388	177	2088	1014	61	365	50	1490
Rate per 1,000 Births	4.8	17.5	38.7	5.6	11.5	16.8	32.8	41.1	20.0	23.5



The teen birth rate (births to mothers under age 18) in Cedar Park was 11.5 per 1,000 births in 2007-08 and 23.5 per 1,000 births in Leander. By race/ethnicity, the rate was highest among African American and Hispanic mothers. The overall rate in both Cedar Park and Leander was lower than the rate in Texas (48.8 per 1,000 births). The rate in the central Texas public health region (Region 7) was lower at 38.8 per 1,000 births, as was the rate in Williamson County (25.2 per 1,000 births).

* Data is based on mother's place of residence including city limits and cities extra territorial jurisdiction. City data represents population within Williamson County for all cities except Cedar Park, Leander, and Round Rock; in these three cities, mothers residing in Travis County are included in the analysis.

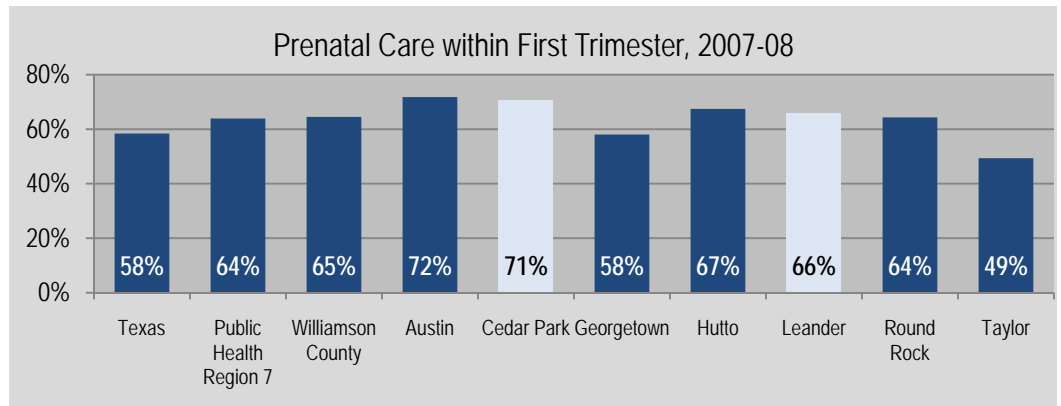


Vital Statistics - Maternal and Child Health (cont.)

Onset of Prenatal Care within 1st Trimester, Cedar Park and Leander Residence, 2007-2008*:

	Cedar Park					Leander				
	White	African American	Hispanic	Other	Total	White	African American	Hispanic	Other	Total
Prenatal Care 1 st Trimester	1,078	27	235	138	1,478	705	34	211	31	981
Total Births	1,466	57	388	177	2,088	1,014	61	365	50	1,490
Percent	73.5%	47.4%	60.6%	78.0%	70.8%	69.5%	55.7%	57.8%	62.0%	65.8%

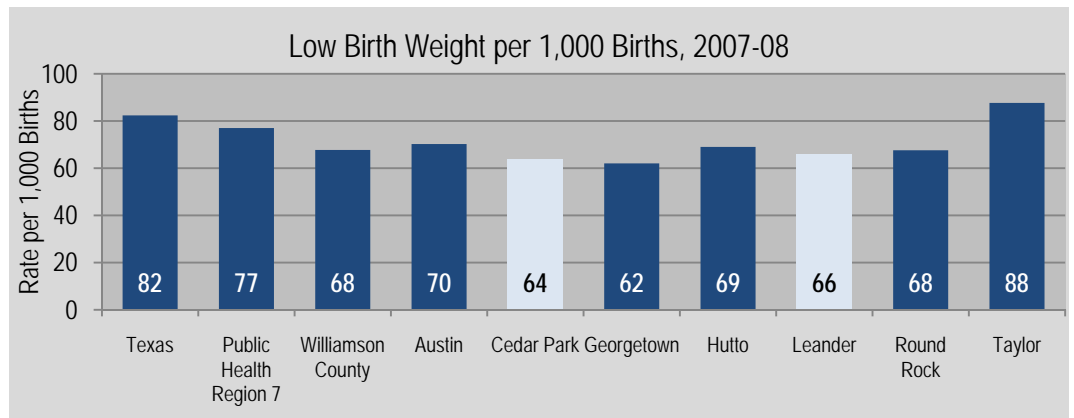
In Cedar Park, 70.8% of mothers received prenatal care in the first trimester, which is higher than the percent in Williamson County (64.5%). In Leander, 65.8% of mothers received parental care in the first trimester.



Low Birth Weight, < 2,500 Grams, Cedar Park and Leander Residence, 2007-2008*:

	Cedar Park					Leander				
	White	African American	Hispanic	Other	Total	White	African American	Hispanic	Other	Total
Low Birth Weight Births	86	3	24	20	133	56	4	34	4	98
Total Births	1466	57	388	177	2088	1014	61	365	50	1490
Rate Per 1,000 Births	58.7	52.6	61.9	113.0	63.7	55.2	65.6	93.2	80.0	65.8

In Cedar Park, the rate of births with low birth weight (63.7) was lower than the rate in Williamson County (67.7). In Leander, the rate was 65.8, which was also lower than the county rate.

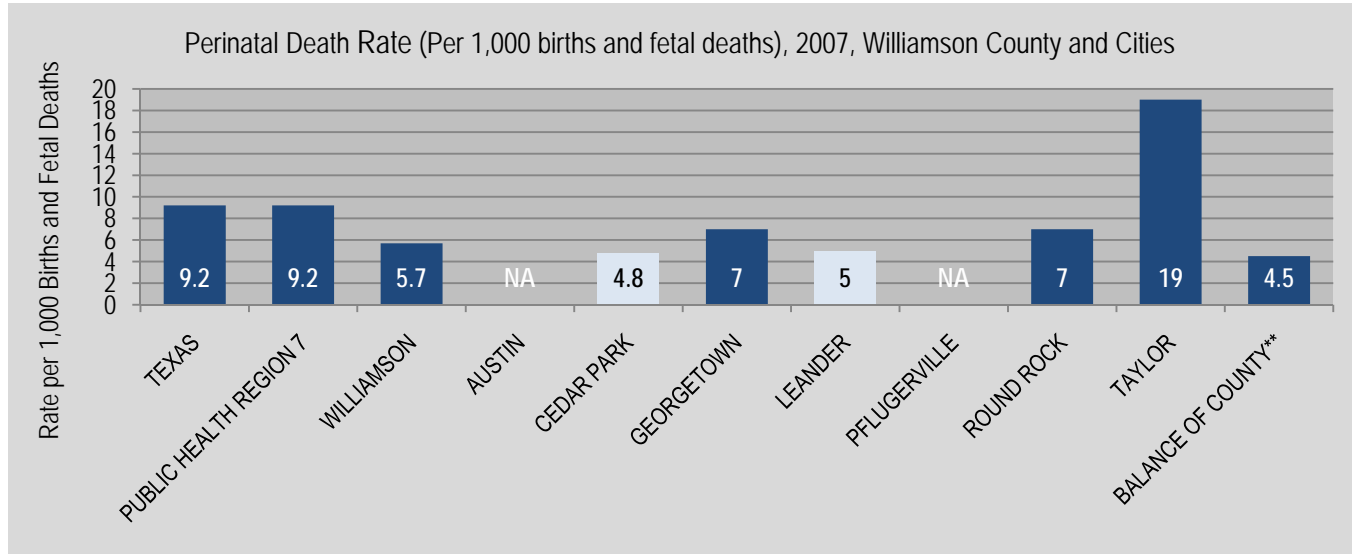


* Data is based on mother's place of residence including city limits and cities extra territorial jurisdiction. City data represents population within Williamson County for all cities except Cedar Park, Leander, and Round Rock; in these three cities, mothers residing in Travis County are included in the analysis.

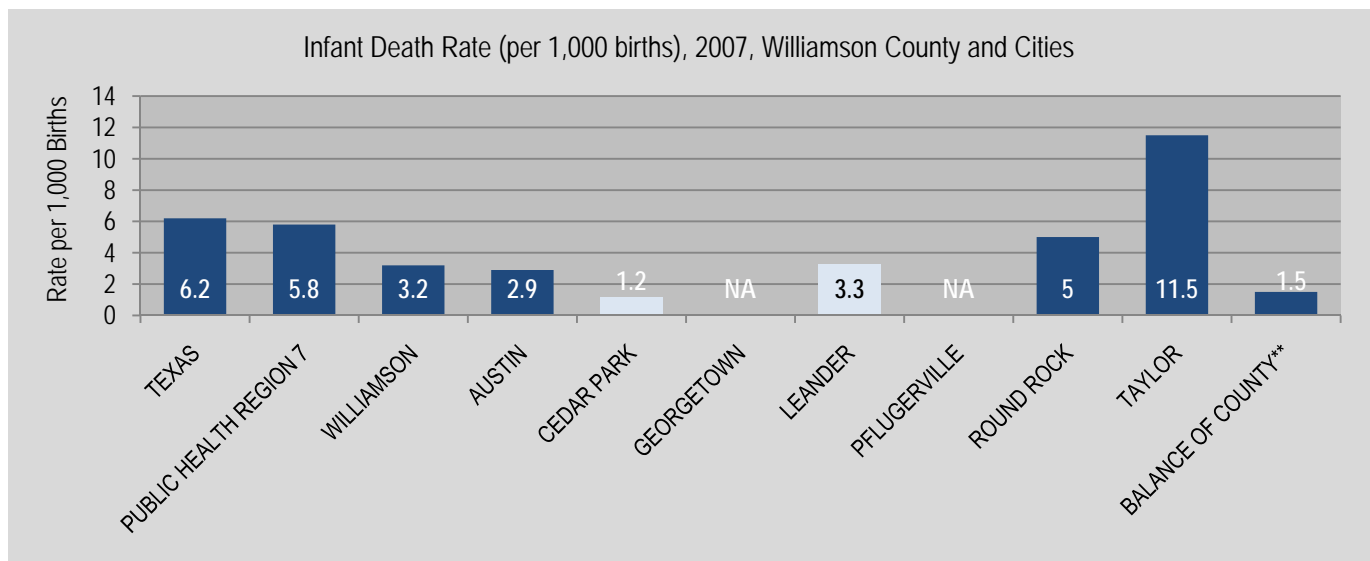


Vital Statistics - Maternal and Child Health (cont.)

Perinatal Death Rate, 2007, Williamson County and Cities***:



Infant Death Rate, 2007, Williamson County and Cities***:



**The Balance of County represents population not included in one of the cities already shown. These are typically those residing outside of city limits or in smaller towns.

*** Data is accurate based on available data on 1/15/2010. The number of births in the county is the same as reflected in earlier charts. However, a small percent of individuals have a different city of residence listed in the 1/15/2010 data file. Data is based on mother's city of residence.



Mortality Data (Cause of Death)

Mortality Rates:

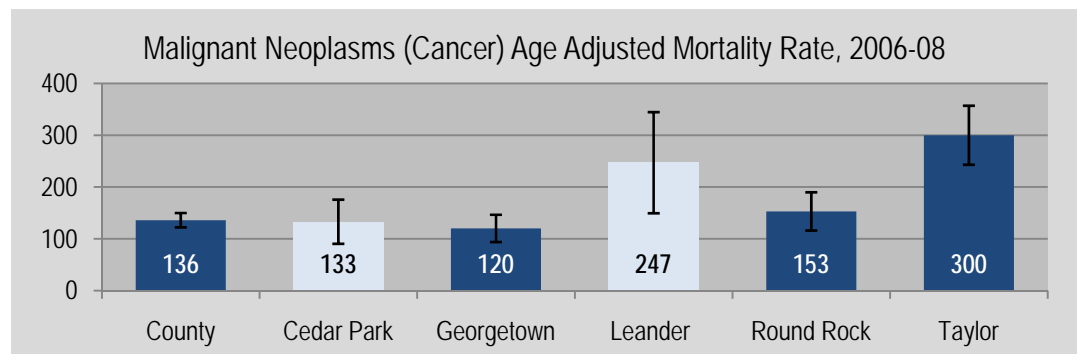
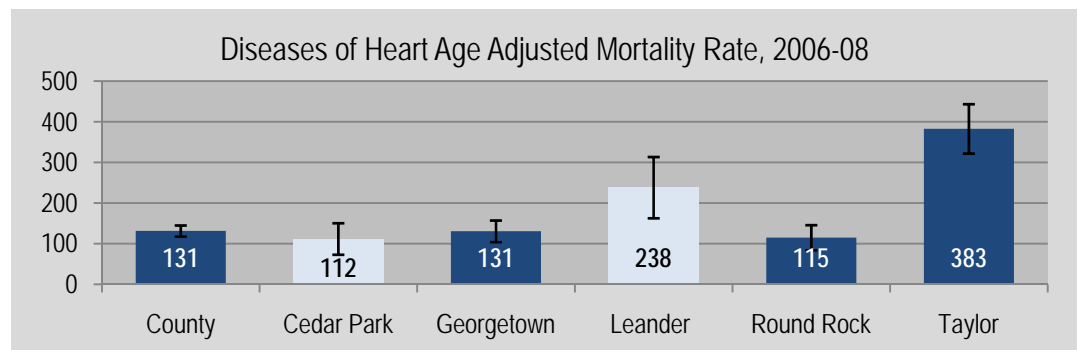
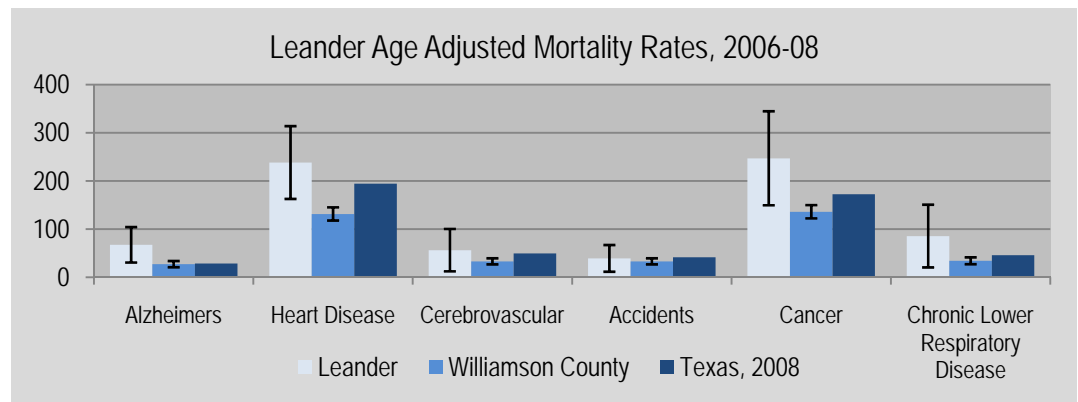
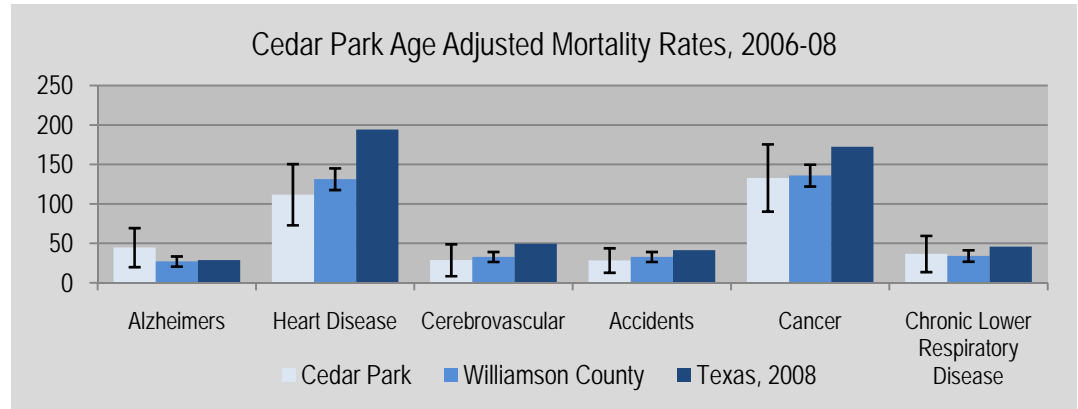
In Cedar Park, cancer is the cause of death with the highest age adjusted rate (133), which represents 23% of deaths. The heart diseases age adjusted rate represents 19% of deaths, and has an age adjusted rate of 112.0.

In Leander, cancer is the cause of death with the highest age adjusted rate (247), which represents 24% of deaths. The heart diseases age adjusted rate represents 19% of deaths, and has an age adjusted rate of 238.0.

The two leading causes of death in Williamson County are also heart disease and cancer. The age adjusted rates are higher in Leander than in the county for these conditions.

Technical Notes: All mortality rates are age adjusted to the standard 2000 US population. Rates are created using 2005-09 population estimates for places. All estimates are given a 95% confidence interval.

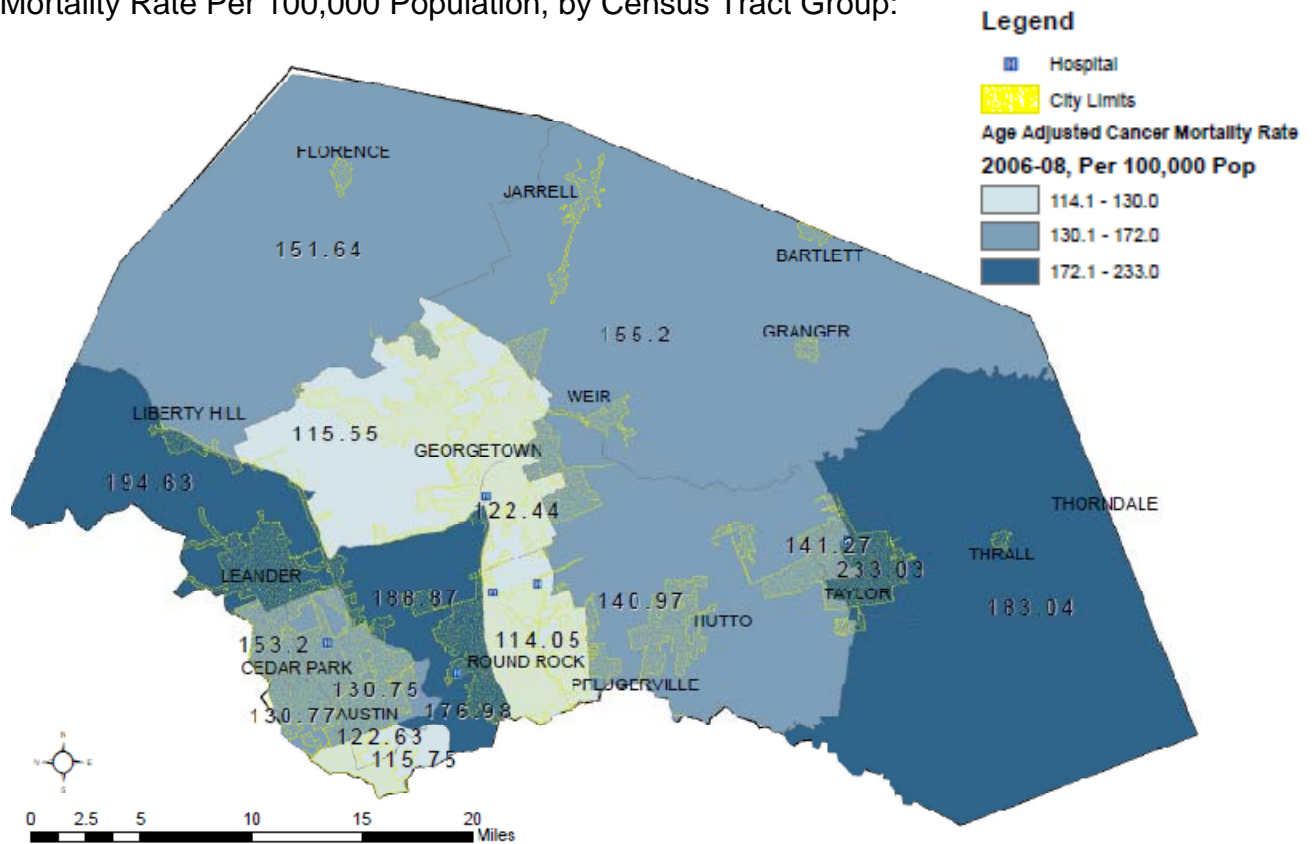
Source: Texas Department of State Health Services, Vital Statistics Unit





Mortality Data (Cause of Death) (cont.)

Cancer Mortality Rate Per 100,000 Population, by Census Tract Group:



Cancer Mortality Rates Map:

The age adjusted cancer mortality rate for Texas in 2008 was 172.4. The highest cancer mortality rate in Williamson County for 2006-08 was seen in the southern and eastern part of Taylor (233.03). Other areas of with a relatively high cancer mortality rate are northern Leander and Liberty Hill (194.63), the western part of Round Rock (188.87), and the southeastern part of Williamson County (183.04).

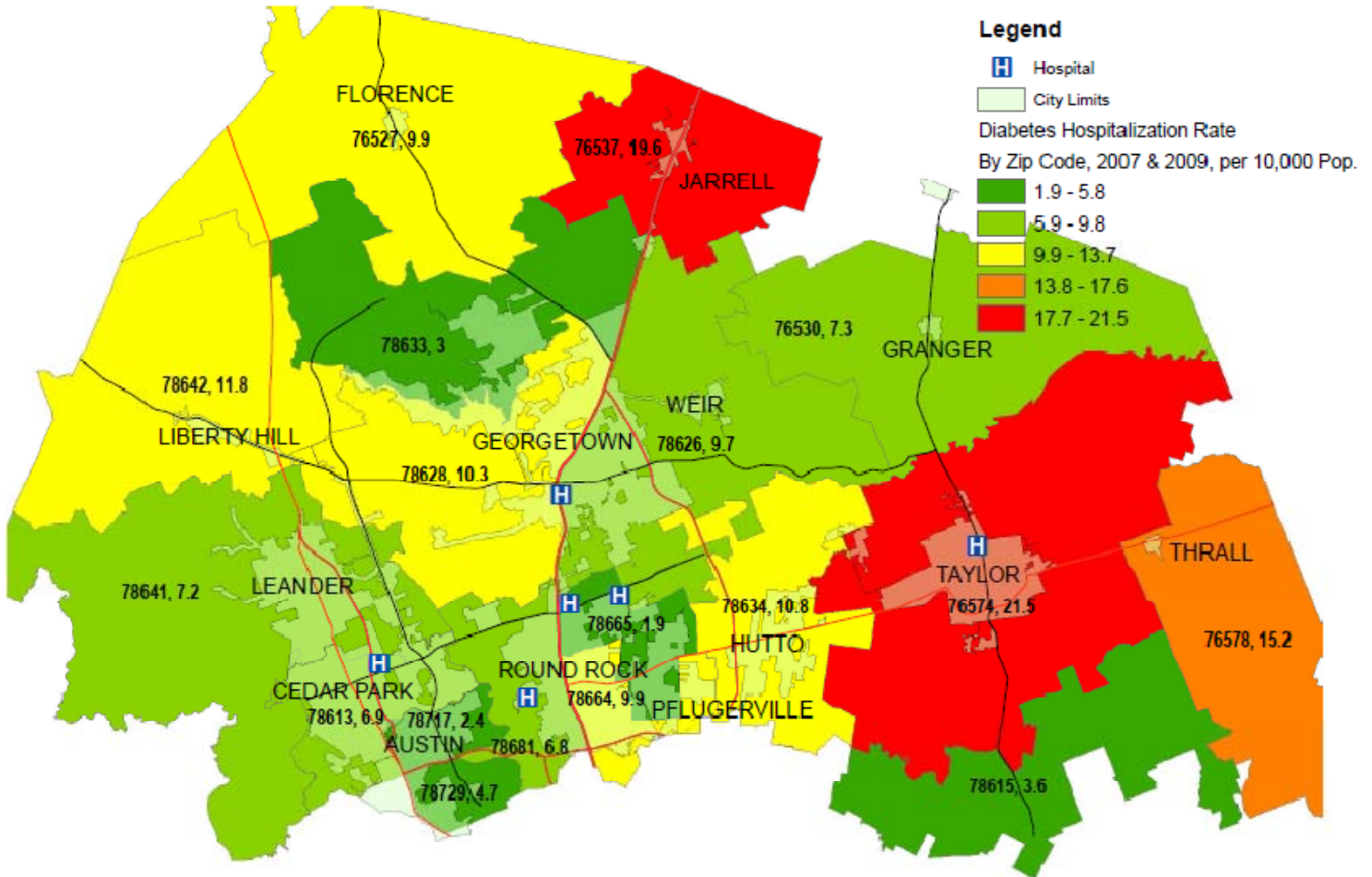
All mortality rates are age adjusted to the standard 2000 US population. Rates are created using 2005-09 population estimates for places.

Technical Notes on the map: Rates were created by combining cause of death data for 2000 census tracts. Each census tract was combined with at least one adjacent tract until each group had over 25 deaths due cancer. Each age adjusted mortality rate has a coefficient of variation of under .30.



Hospital Discharge Data – Chronic Disease

Hospitalization Rate Due to Diabetes (Type I and II), Crude, 2007 & 2009



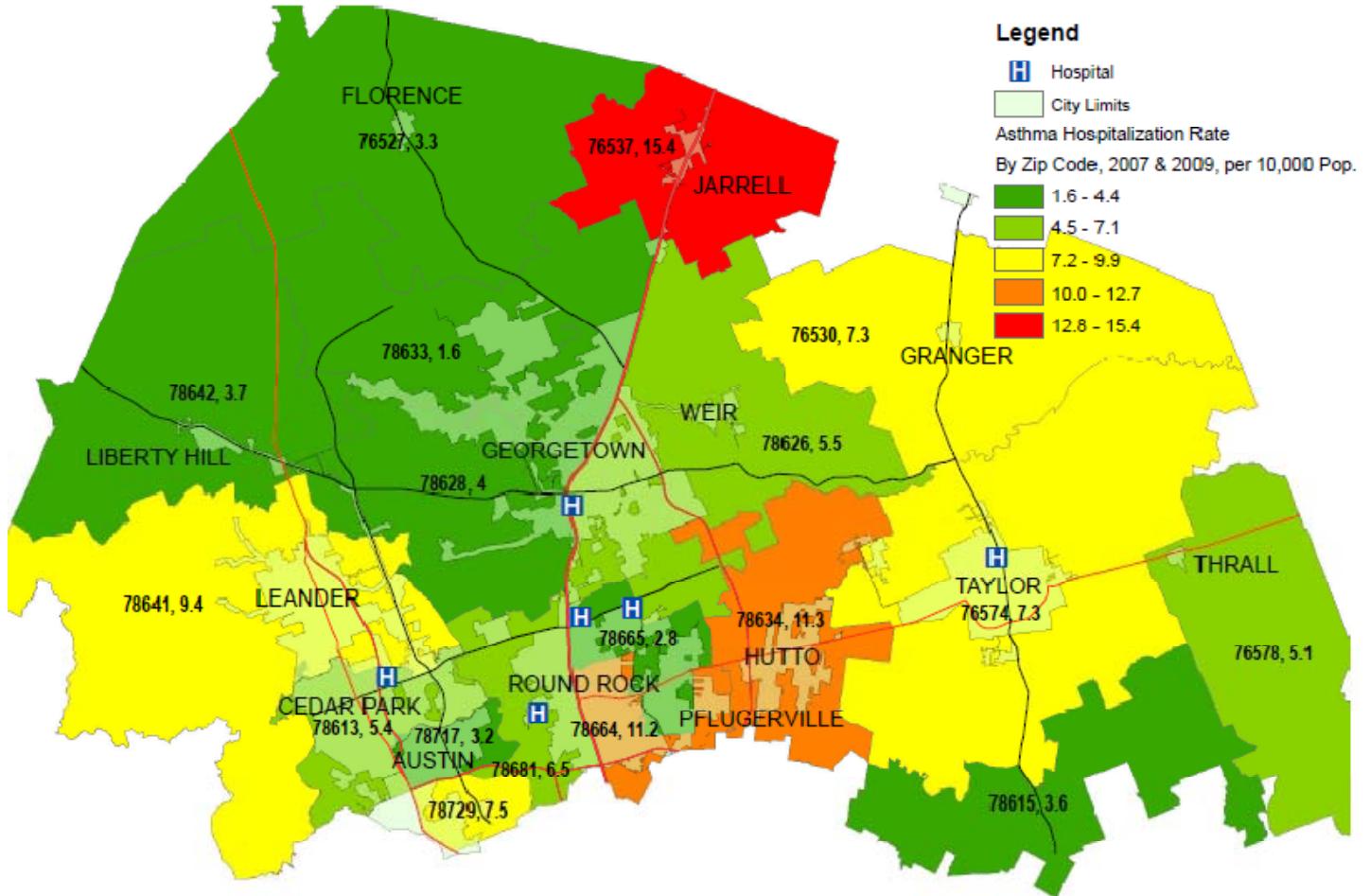
The rate of hospitalization for diabetes by zip code was determined by analysis of available data from 2007 to 2009 for residents of Williamson County. Jarrell and Taylor had the highest rate of hospitalization for diabetes. These were both higher than the state rate of 16.3 per 10,000 population. The rates in Georgetown were lower than the state rate.

Source: *Texas Hospital Inpatient Discharge Public Use Data File, [2007 & 2009]*. Texas Department of State Health Services, Center for Health Statistics, Austin, Texas.



Hospital Discharge Data – Chronic Disease (cont.)

Hospitalization Rate Due to Asthma, Crude, 2007 & 2009



Hospital discharge data from 2007 to 2009 for residents of Williamson County was analyzed to determine the rate of hospitalization for asthma by zip code. Jarrell, Hutto, and the southeastern part of Round Rock have the highest rates of hospitalization for asthma. The age-adjusted asthma hospitalization rate in 2007 for Texas was 10.9. The rates in Georgetown were lower than the state rate.

Source: *Texas Hospital Inpatient Discharge Public Use Data File*, [2007 & 2009]. Texas Department of State Health Services, Center for Health Statistics, Austin, Texas.



Child Health

Type 2 Diabetes Measurement, Leander ISD and Liberty Hill ISD:

The Risk Assessment for Type 2 Diabetes in Children is a legislatively mandated program developed, coordinated, and administered by The University of Texas-Pan American Border Health Office (BHO). The program assesses children who may be at high risk of developing Type 2 diabetes. During vision/hearing and scoliosis screenings of 1st, 3rd, 5th, 7th, and 9th graders, certified individuals assess children for the acanthosis nigricans (AN) marker, a skin condition that signals high insulin levels. Children who are identified with the marker undergo additional assessments of body mass index (BMI), BMI percentile, and blood pressure. Referrals to a health care professional for further assessment are issued to the parents of these children, alerting each parent of what the risk factors are and what changes will be necessary to prevent or delay future health problems for children at risk of developing type 2 diabetes and other health conditions. Source: Texas Risk Assessment for Type 2 Diabetes.

The three year average for referrals at Leander ISD (1.3%) and Liberty Hill ISD (2.2%) are both lower than the regional average (4.3%).

Referrals for Type 2 Diabetes Risk:

School District/ Region	School Year									Percent Referred, Three Year Average
	2010-11			2009-10			2008-09			
	Referred	Assessed	Percent	Referred	Assessed	Percent	Referred	Assessed	Percent	
Leander ISD	208	11,809	1.8%	141	12,025	1.2%	59	7,376	0.8%	1.3%
Liberty Hill ISD	6	403	1.5%	3	407	0.7%	13	182	7.1%	2.2%
Region 13 (Central Texas Counties)	4,316	101,942	4.20%	4,829	119,382	4.00%	3,741	81,522	4.60%	4.30%



Child Health (cont.)

Fitnessgram, Leander ISD and Liberty Hill ISD:

Fitnessgram is a fitness assessment that is legislatively mandated for use in all Texas public schools. Students complete an assessment that includes a variety of health-related physical fitness tests that assess aerobic capacity; muscular strength, muscular endurance and flexibility; and body composition. Scores from these assessments are compared to Healthy Fitness Zone standards to determine students' overall physical fitness. Standards are based on levels of fitness needed for good health as determined by the Fitnessgram creators at the Cooper Institute. Source: Texas Education Agency.

Over 90 % of Leander ISD and Liberty Hill ISD students completed the Fitnessgram assessment. In Leander ISD, 67% of these students achieved the health fitness zone in at least 5 of the areas tested, while 69% reached this goal in Liberty Hill ISD. Comparatively, 56% of assessed Round Rock students achieved the health fitness zone in at least 5 of the areas tested.

